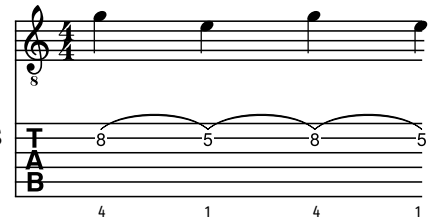


Two Hand Tapping Basics

Before learning an entire tapping pattern, it is advised to first isolate and practice the basic moves involved in tapping, specifically: left hand legato, and the right hand tap.

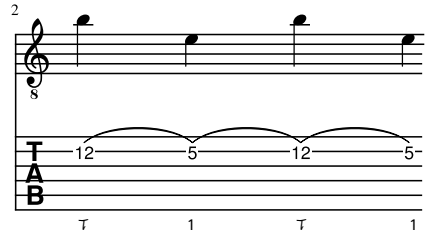
Left Hand Legato

Practice playing the notes E and G without picking, by hammering on the pinkie to fret 8, then pulling the pinkie off+down to allow the 5th fret to ring out. Do not remove the index finger. Ensure each note rings out loud and clear. Try to mute strings 1 + 3 by slightly contacting them both with the tip of the index finger.



Right Hand Tap

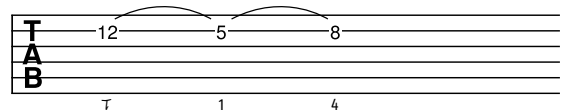
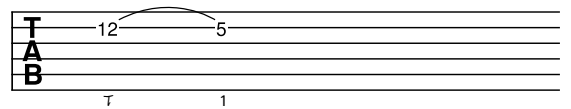
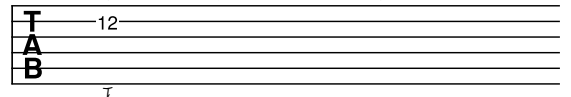
Place the right hand palm against strings 6-3 to ensure they don't ring out. Position the hand far up on the neck to easily reach the 12th fret on the second string. Strike the 12th fret, B, with the right-hand middle or index finger, then pull down+off to create a pull-off to the note E.



Three Steps To Tapping

- 1) Prepare your left hand fingers on frets 5 + 8. Tap the 12th fret, then immediately remove the pinkie
- 2) Pull off+down with the right-hand tap to allow fret 5 to ring out.
- 3) Hammer on the pinkie to fret 8, then repeat steps 1 - 3

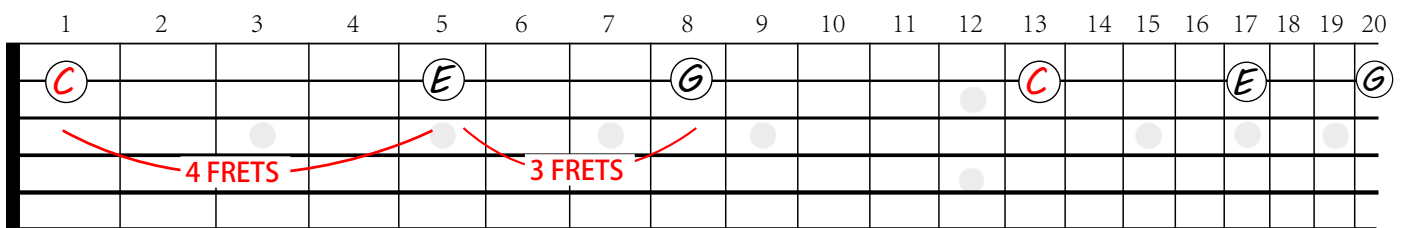
*Left Hand fingers should already be in place before starting this tap!



Do not remove the index finger!

Major Arpeggios

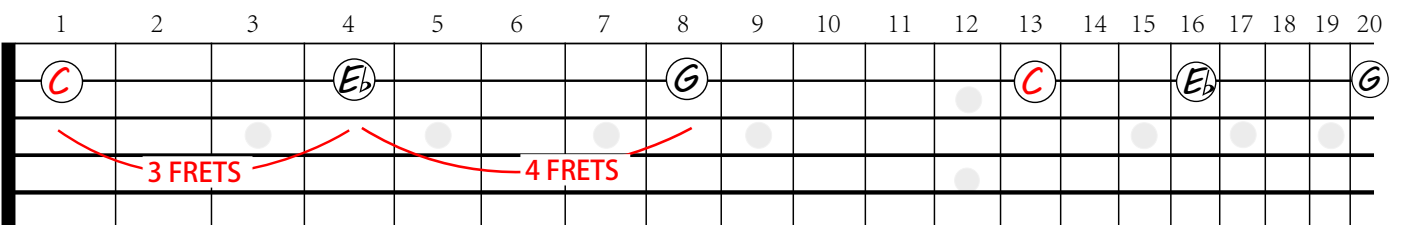
The three notes of a major chord can be found by starting on a root, then traveling 4 frets, then 3 frets.



Example: The notes of the C Major Chord (C- E - G) on the 2nd string

Minor Arpeggios

The three notes of a minor chord can be found by starting on a root, then traveling 3 frets, then 4 frets.



Example: The notes of the C Minor Chord (C- Eb- G) on the 2nd string

Two Hand Tapping Patterns

3-Note Patterns

Two systems of musical notation for 3-note tapping patterns. Each system consists of a treble clef staff with a 3/8 time signature, a guitar TAB staff, and a bass clef staff. The first system shows a pattern of notes 12, 5, 8 on the treble staff and 12, 5, 8 on the bass staff, with a '3' indicating a triplet. The second system shows a pattern of notes 12, 8, 5 on the treble staff and 12, 8, 5 on the bass staff, also with a '3' indicating a triplet.

4-Note Patterns

Two systems of musical notation for 4-note tapping patterns. Each system consists of a treble clef staff, a guitar TAB staff, and a bass clef staff. The first system shows a pattern of notes 12, 5, 8, 5 on the treble staff and 12, 5, 8, 5 on the bass staff. The second system shows a pattern of notes 12, 8, 5, 8 on the treble staff and 12, 8, 5, 8 on the bass staff.

5-Note Patterns

Two systems of musical notation for 5-note tapping patterns. Each system consists of a treble clef staff, a guitar TAB staff, and a bass clef staff. The first system shows a pattern of notes 12, 8, 12, 8, 5 on the treble staff and 12, 8, 12, 8, 5 on the bass staff, with a '5' indicating a quintuplet. The second system shows a pattern of notes 12, 8, 5, 8, 5 on the treble staff and 12, 8, 5, 8, 5 on the bass staff, also with a '5' indicating a quintuplet.

6-Note Patterns

Two systems of musical notation for 6-note tapping patterns. Each system consists of a treble clef staff, a guitar TAB staff, and a bass clef staff. The first system shows a pattern of notes 12, 5, 8, 12, 8, 5 on the treble staff and 12, 5, 8, 12, 8, 5 on the bass staff, with a '6' indicating a sextuplet. The second system shows a pattern of notes 12, 8, 12, 8, 5, 8 on the treble staff and 12, 8, 12, 8, 5, 8 on the bass staff, also with a '6' indicating a sextuplet.