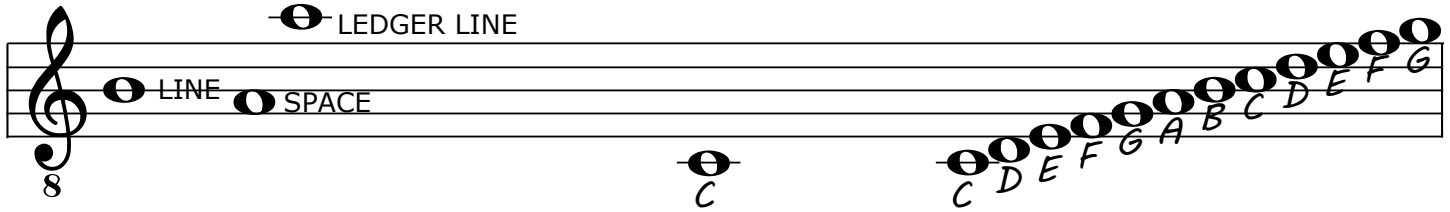


The Music Staff and Standard Notation

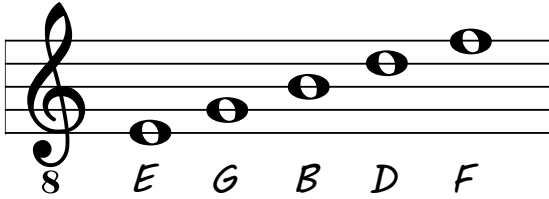
Notes can be written on **lines** or **spaces** on the staff. They can also appear above or below the staff on **ledger lines**.

This note is **middle C**. It is found one ledger line below the staff.

Notes appear in alphabetical order traveling up from a line to the next space, to the next line, etc.

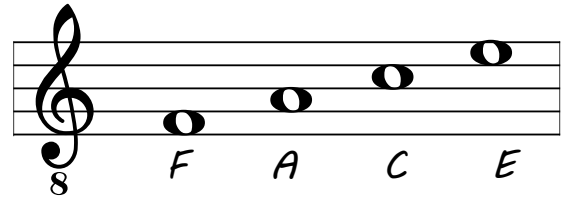


The following notes are all on the staff **lines**.



These letters can easily be remembered with the phrase
Every Good Boy Deserves Fudge.

The following notes are all on the staff **spaces**.

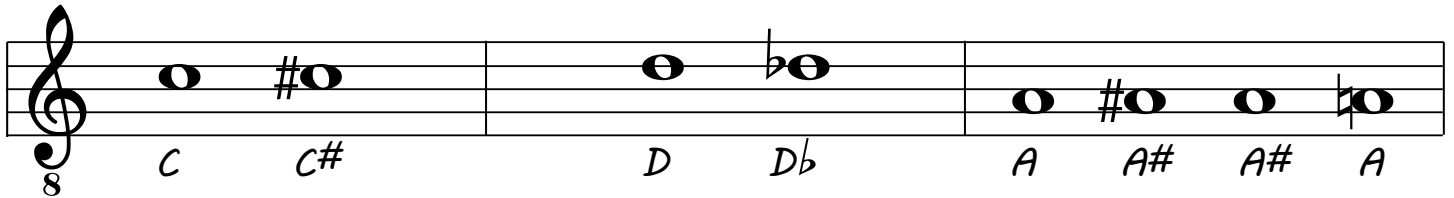


These letters can easily be remembered because "**space**" rhymes with **FACE**.

A sharp sign (#) before a note means the note will be sharp. The sign is centered on the same line or space as the note.

A flat sign (b) before a note means the note will be flat.

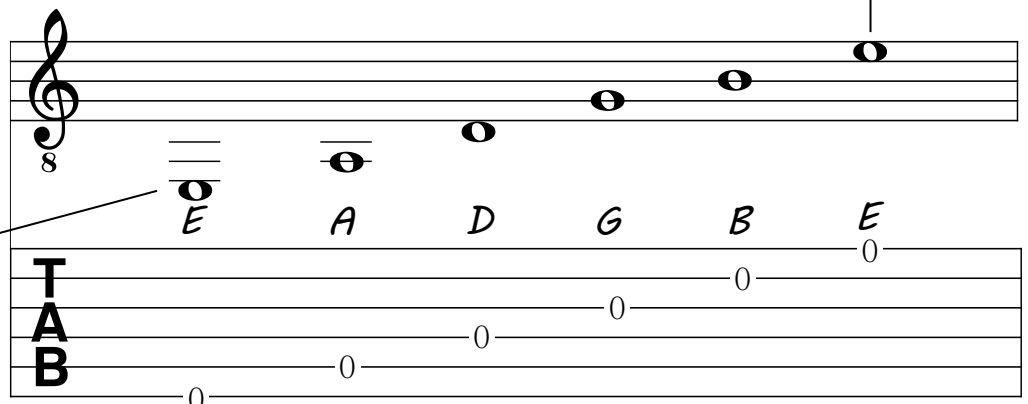
A note will remain flat or sharp until a natural sign (♮) appears or the measure ends.



Open Strings On The Guitar And Their Position On The Staff

The open 1st string (E) is the note found on the top space of the staff.

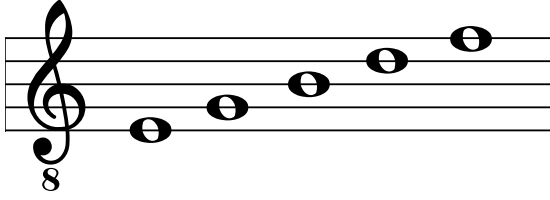
The open 6th string (E) is the lowest note on a guitar in standard tuning. This note is found below the third ledger line under the staff.



Worksheet: Music Staff

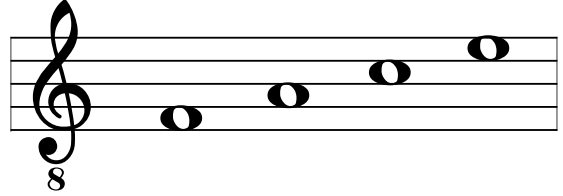
The following notes are all on the staff **lines**.

Below each note, write in its correct name.



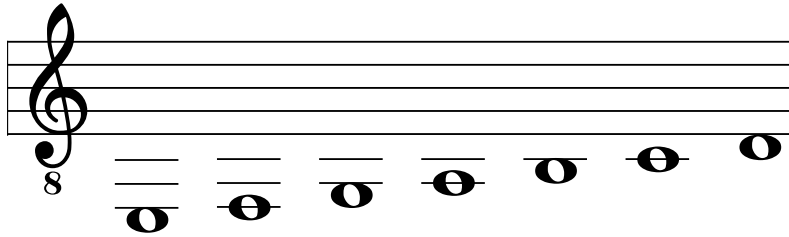
The following notes are all on the staff **spaces**.

Below each note, write in its correct name.



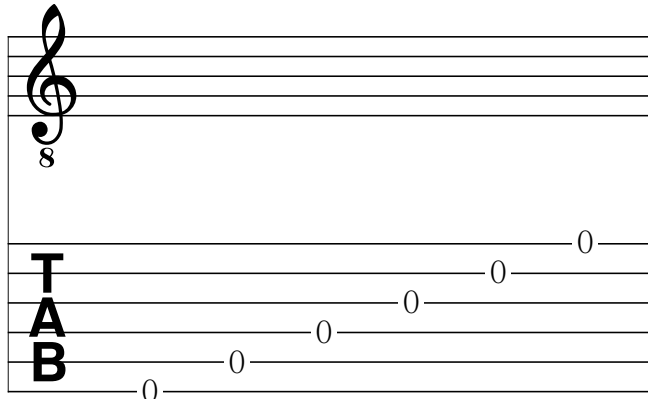
The following notes are **below** the staff.

Below each note, write in its correct name.

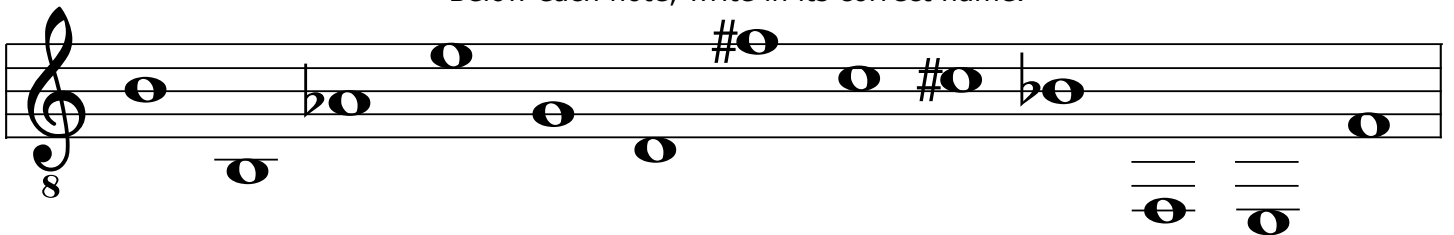


The open strings of the guitar in standard tuning are represented in Tablature. Above each note, draw in its correct placement on the music staff.

Draw in your own ledger lines below the staff



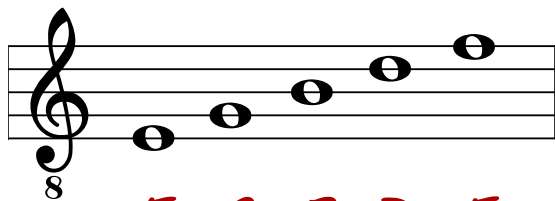
Below each note, write in its correct name.



Worksheet: Music Staff (Answers)

The following notes are all on the staff **lines**.

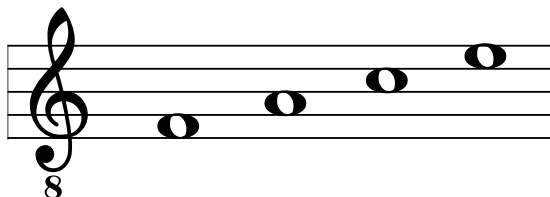
Below each note, write in its correct name.



E G B D F

The following notes are all on the staff **spaces**.

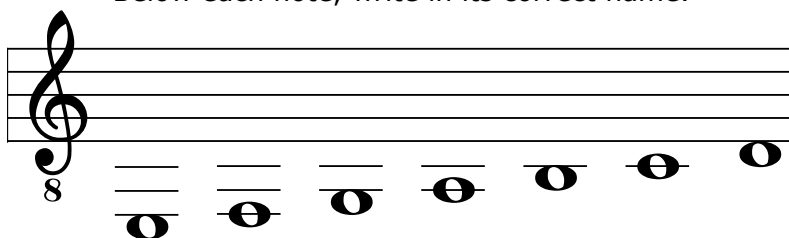
Below each note, write in its correct name.



F A C E

The following notes are **below** the staff.

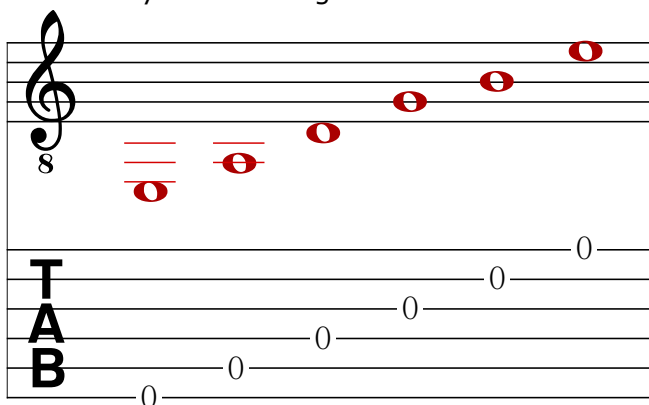
Below each note, write in its correct name.



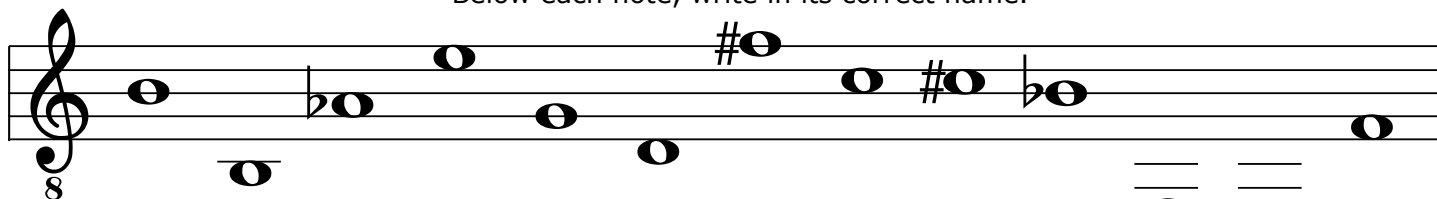
E F G A B C D

The open strings of the guitar in standard tuning are represented in Tablature. Above each note, draw in its correct placement on the music staff.

Draw in your own ledger lines below the staff



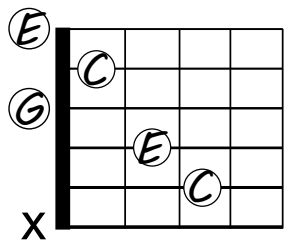
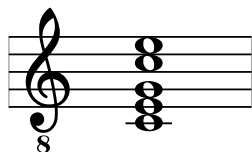
Below each note, write in its correct name.



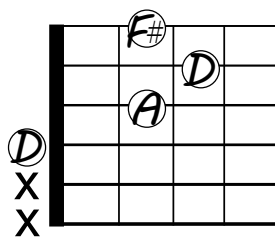
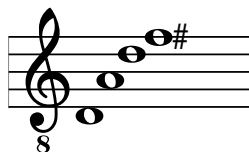
B B A♭ E G D F♯ C C♯ B♭ F E F

Worksheet: Music Staff and Chord Tones

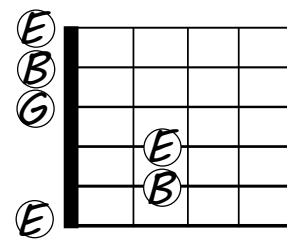
Write in the notes of the chord on the music staff. Either stack the notes, or write them from lowest to highest. The first two examples (C and D) are already completed.



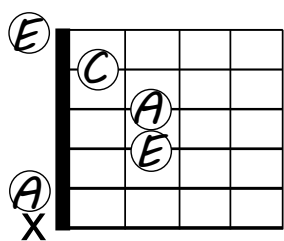
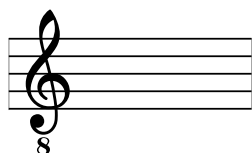
C



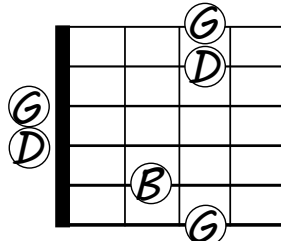
D



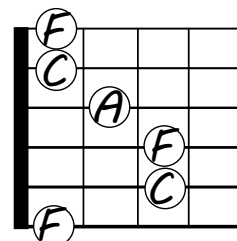
Em



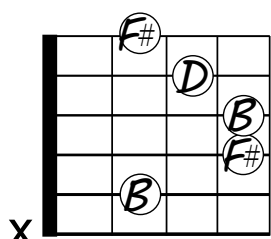
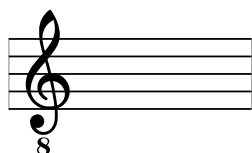
Am



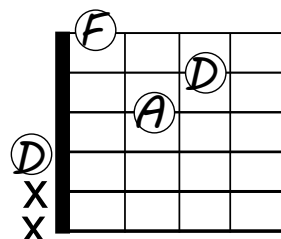
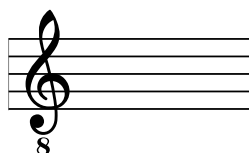
G



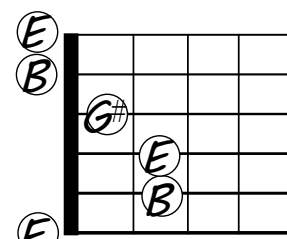
F



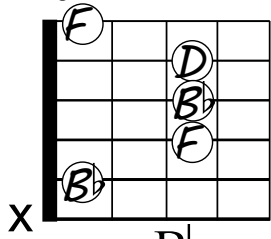
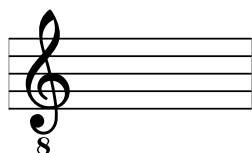
Bm



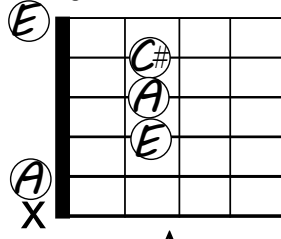
Dm



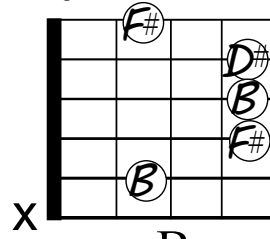
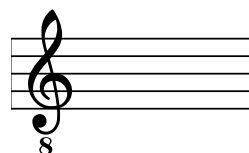
E



B \flat



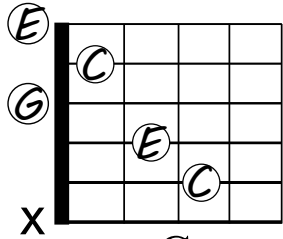
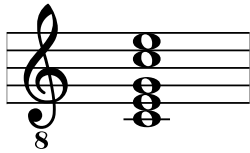
A



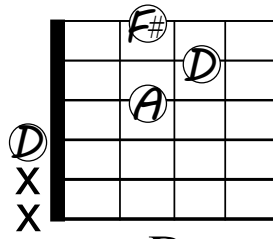
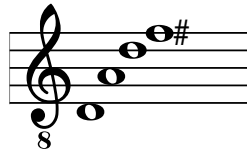
B

Worksheet: Music Staff and Chord Tones (Answers)

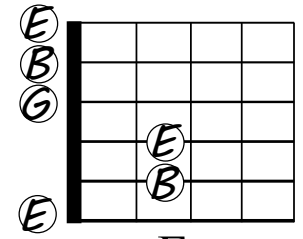
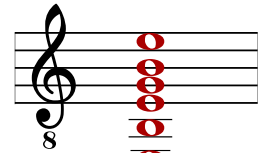
Write in the notes of the chord on the music staff. Either stack the notes, or write them from lowest to highest. The first two examples (C and D) are already completed.



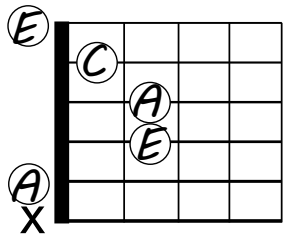
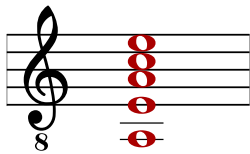
C



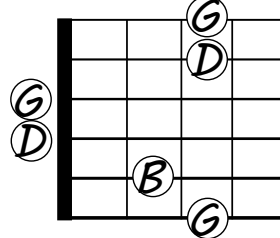
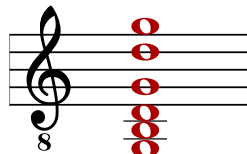
D



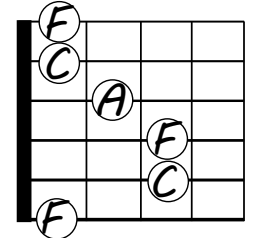
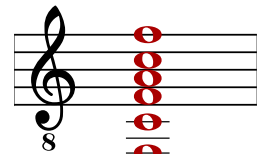
Em



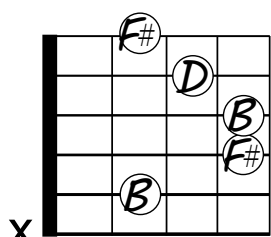
Am



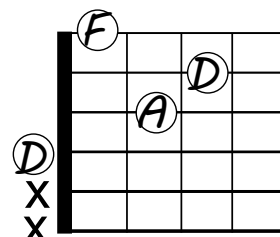
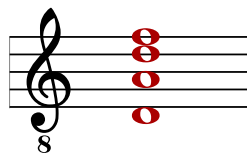
G



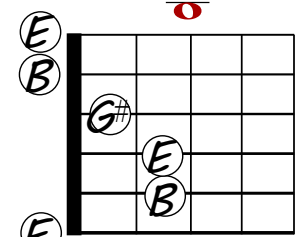
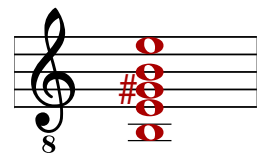
F



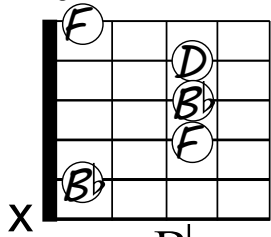
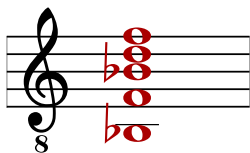
Bm



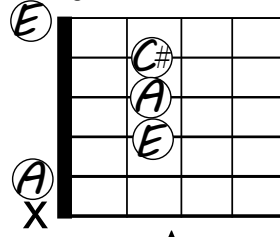
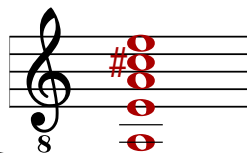
Dm



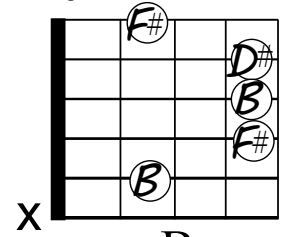
E



Bb



A



B